

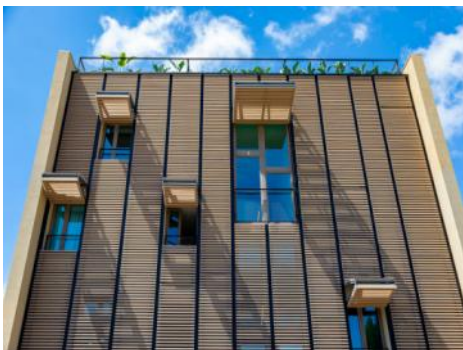
Bonanova
référence du bien 116632A




PORTA MALLORQUINA®
Your home. Our passion.

Palma Sea View - Exclusive Mediterranean Luxury Residential Project with Highest Standards- 2 SZ Duplex Penthouse with Pool - purchase

séjour:	106 m ²	piscine:	✓
chambres:	2	energy certificate:	en proceso
salles de bain:	2		
terrasse/balcon:	✓		
vue sur la mer:	✓	prix:	€ 1.225.000,-



Bonanova
référence du bien 116632A



description:

Parallel East & West' presents itself with 2 innovative buildings, each with 6 luxury flats, which optionally have a private swimming pool, their own garden or a protected roof terrace with panoramic views over the bay of Palma, Cala Major and Illetas.

Architectural aesthetics, contemporary, respectful sustainability, highest energy efficiency as well as a harmonious embedding in the natural environment have been combined at an outstanding level in this special residential project.

The building ensemble is located between the polarities of "Panorama Palma Bay" and "Bellver Castle".

This duplex, 2-level penthouse has a total area of 106 sqm distributed over 2 bedrooms with bathrooms en suite, a guest WC, an utility room, a dressing area, and a large kitchen and living area with terrace. The beautiful roof terrace with panoramic and sea views has a seating area and a pool with an area for sunbathing.

There is also a fully equipped, air-conditioned fitness area.

One garage spaces with storage room is included in the purchase price.

Orientation: E/W

Bonanova

référence du bien 116632A



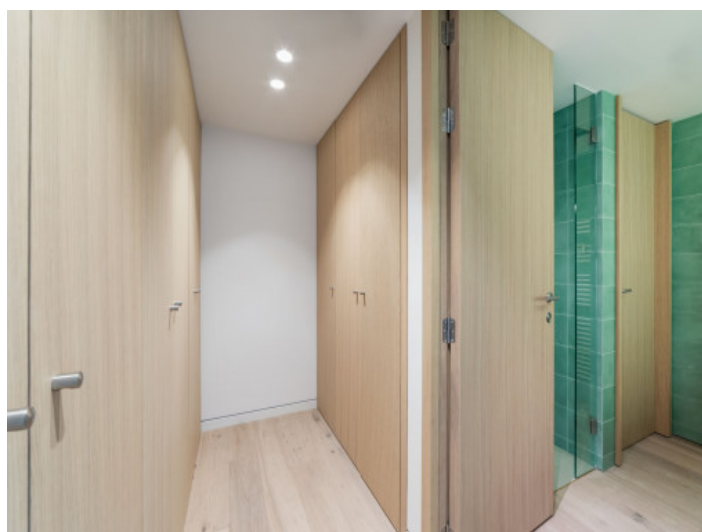
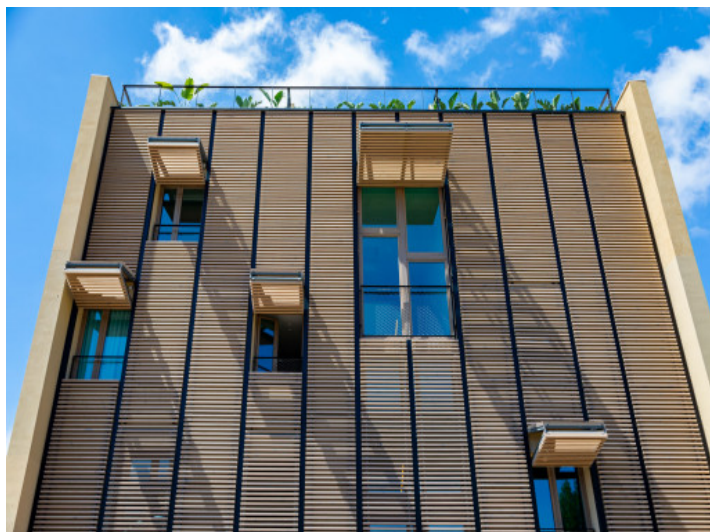
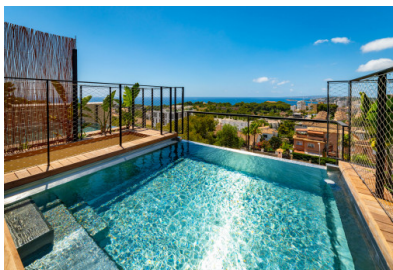
localisation & environnement:

Due to its elevated location, bordering with the wonderful Parc de Bellver with the famous Bellver castle, the beautiful area of Bonanova provides wonderful views over the whole of the bay of Palma, the open sea and the mountains.

This villa district, although centrally located and with superb connections to the centre of Palma by car or bus, is one of the quietest and most secure districts of Palma. It offers, therefore, the possibility to live in a peaceful area but still be able to easily enjoy all the facilities of the town with its restaurants, bars, cafes and shops.

In addition this neighbourhood itself offers exquisite gastronomy, supermarkets, sports locations and clinics, all close by. The shopping centre of Porto Pi, for example, is only a few minutes away by car and offers a huge choice of shops and restaurants. Lovely beaches such as that in Cala Major are also only a few minutes away by car. Bonanova, furthermore, is also ideal for children with the 'Queen's College' which enjoys an excellent reputation internationally.

Bonanova
référence du bien 116632A

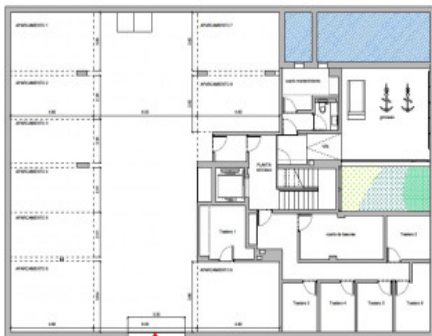


All information is correct to the best of our knowledge. Errors and prior sale excepted. This prospectus is purely for information purposes. Only the notarized deed of sale is legally binding.

Bonanova référence du bien 116632A



APARCAMIENTOS Y TRASTEROS
PLANTA SÓCANA
 GARAJE 1 (CARRO GARAJE)
 PLAZA 1 (C/ LATA 13, 20)
 PLAZA 2 (C/ LATA 13, 20)
 PLAZA 3 (C/ LATA 13, 20)
 PLAZA 4 (C/ LATA 13, 20)
 PLAZA 5 (C/ LATA 13, 20)
 PLAZA 6 (C/ LATA 13, 20)
 PLAZA 7 (C/ LATA 13, 20)
 PLAZA 8 (C/ LATA 13, 20)
 PLAZA 9 (C/ LATA 13, 20)
 PLAZA 10 (C/ LATA 13, 20)
 PLAZA 11 (C/ LATA 13, 20)
 PLAZA 12 (C/ LATA 13, 20)
 PLAZA 13 (C/ LATA 13, 20)
 PLAZA 14 (C/ LATA 13, 20)
 PLAZA 15 (C/ LATA 13, 20)
 PLAZA 16 (C/ LATA 13, 20)
 PLAZA 17 (C/ LATA 13, 20)
 PLAZA 18 (C/ LATA 13, 20)
 PLAZA 19 (C/ LATA 13, 20)
 PLAZA 20 (C/ LATA 13, 20)



All information is correct to the best of our knowledge. Errors and prior sale excepted. This prospectus is purely for information purposes. Only the notarized deed of sale is legally binding.